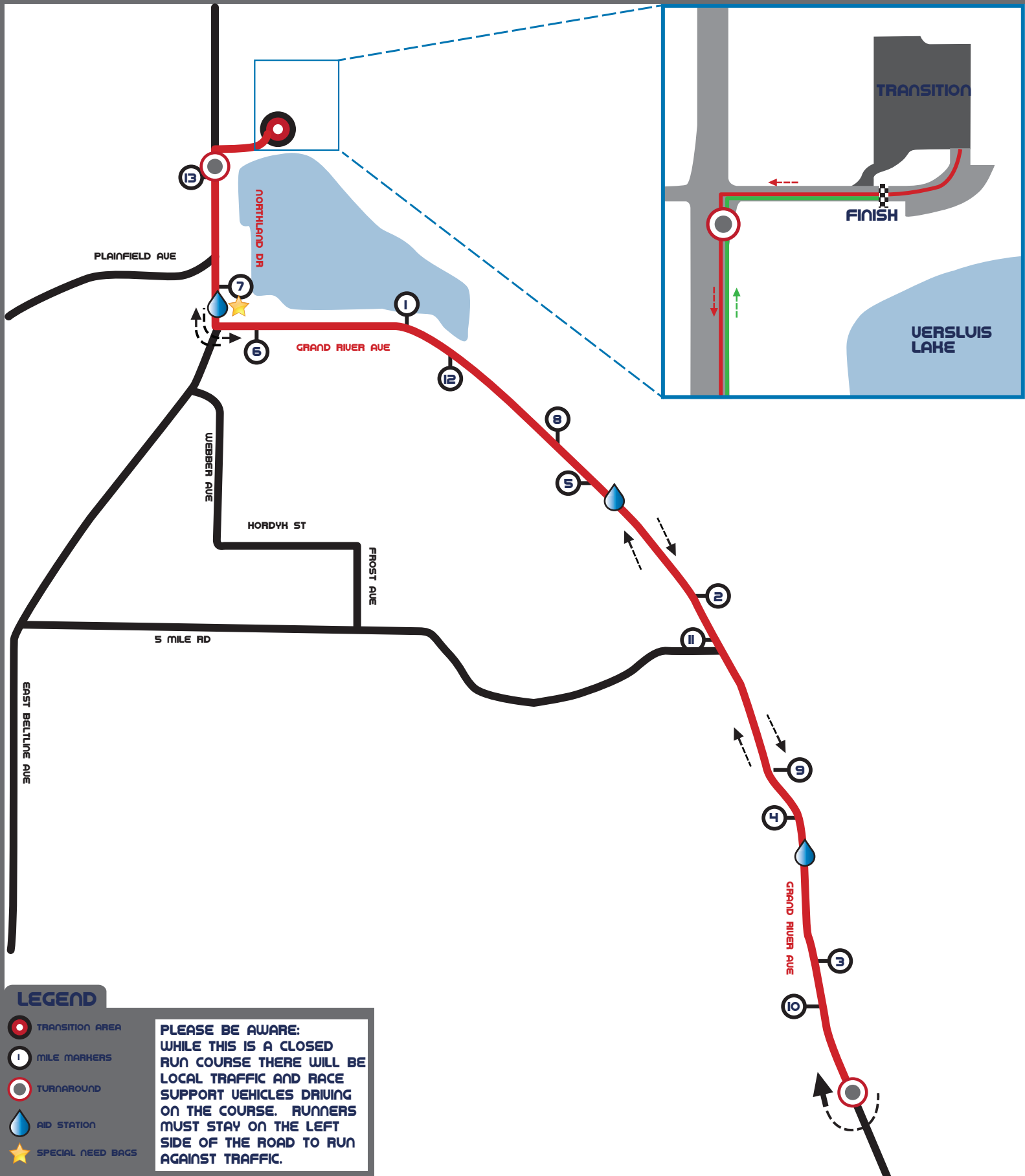


MICHIGAN TITANIUM

RUN COURSE
FULL 26.2 - 4-TIME OUT&BACK
HALF 13.1 - DOUBLE OUT&BACK



LEGEND

- TRANSITION AREA
- MILE MARKERS
- TURNAROUND
- AID STATION
- SPECIAL NEED BAGS

PLEASE BE AWARE:
WHILE THIS IS A CLOSED RUN COURSE THERE WILL BE LOCAL TRAFFIC AND RACE SUPPORT VEHICLES DRIVING ON THE COURSE. RUNNERS MUST STAY ON THE LEFT SIDE OF THE ROAD TO RUN AGAINST TRAFFIC.